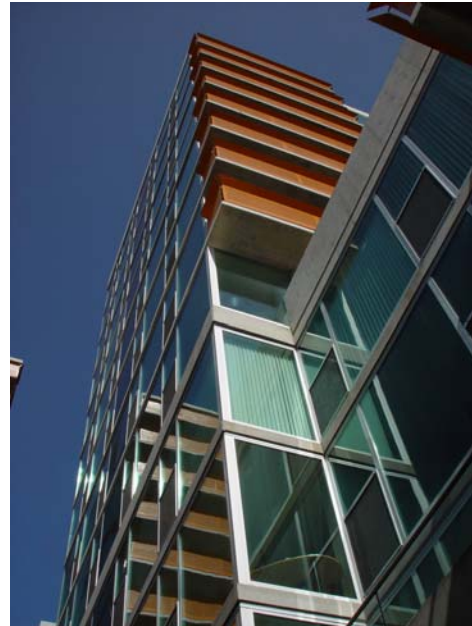




Concrete Structures of the Midwest, Inc.

Project Profile

Optima Towers



Developer:	Optima, Inc.
General Contractor:	Optima, Inc.
Architect:	Optima, Inc.
Structural Engineer:	Thornton-Tommasetti Engineers
Location:	1580 Sherman Avenue Evanston, Illinois
Type of Structure:	Mid Rise Residential

Optima Towers is a mixed use mid-rise structure. The project consists of one below and three above grade parking levels, grade level retail space, and nine levels of luxury residential space. The building incorporates exposed architectural concrete walls, beams, and slab edges with floor to ceiling aluminum and glass windows. This critically acclaimed building is in a prominent location in downtown Evanston. Optima Towers was presented with The Design Evanston award for Excellence in Multi-Family Residential Design on Friday, April 25, 2003.

Concrete Structures was responsible for all cast in place concrete work above the caisson level, and completed the project on schedule.